

Designed to last

A high-angle, top-down view of a modern dental chair and its associated equipment. The chair is a vibrant blue with a high backrest and adjustable armrests. It is surrounded by various white and grey components, including a large overhead light arm, a control panel with a small screen, and a tray holding several dental handpieces. The entire setup is on a light-colored, reflective surface.

# 8000 Series Technical Specification and Images

February 2013  
We reserve the right to make  
changes without prior notice

**Dental units designed to last.**

### **FD-8000B1**

The 8000 B1 is a floor-mounted dental unit with a connected instrument arm and supply connections underneath the unit body. The instrument tubing is run through low-friction doorio whip arms. There may be one or two control panels on the side of the instrument bridge to control the instruments and the chair.

The dental light is connected to the unit body with an additional light column. An optional monitor arm is available for this column.

The following cuspidors are available for connection to the unit body:

- Cuspidor Compact with a glass bowl and telescopic suction arm;
- Compact telescopic suction arm without bowl;
- Cuspidor Export with a ceramic bowl and assistant suction arm with control panel;
- Cuspidor Export with a ceramic bowl and telescopic suction arm.

The following suction arms are available with the FD-8000B1 model:

- Telescopic suction arm;
- Dürr Comfort hose holder with FD-7000 suction arm;
- FD-7000 hose holder 3- and 4-place (plastic or metal).

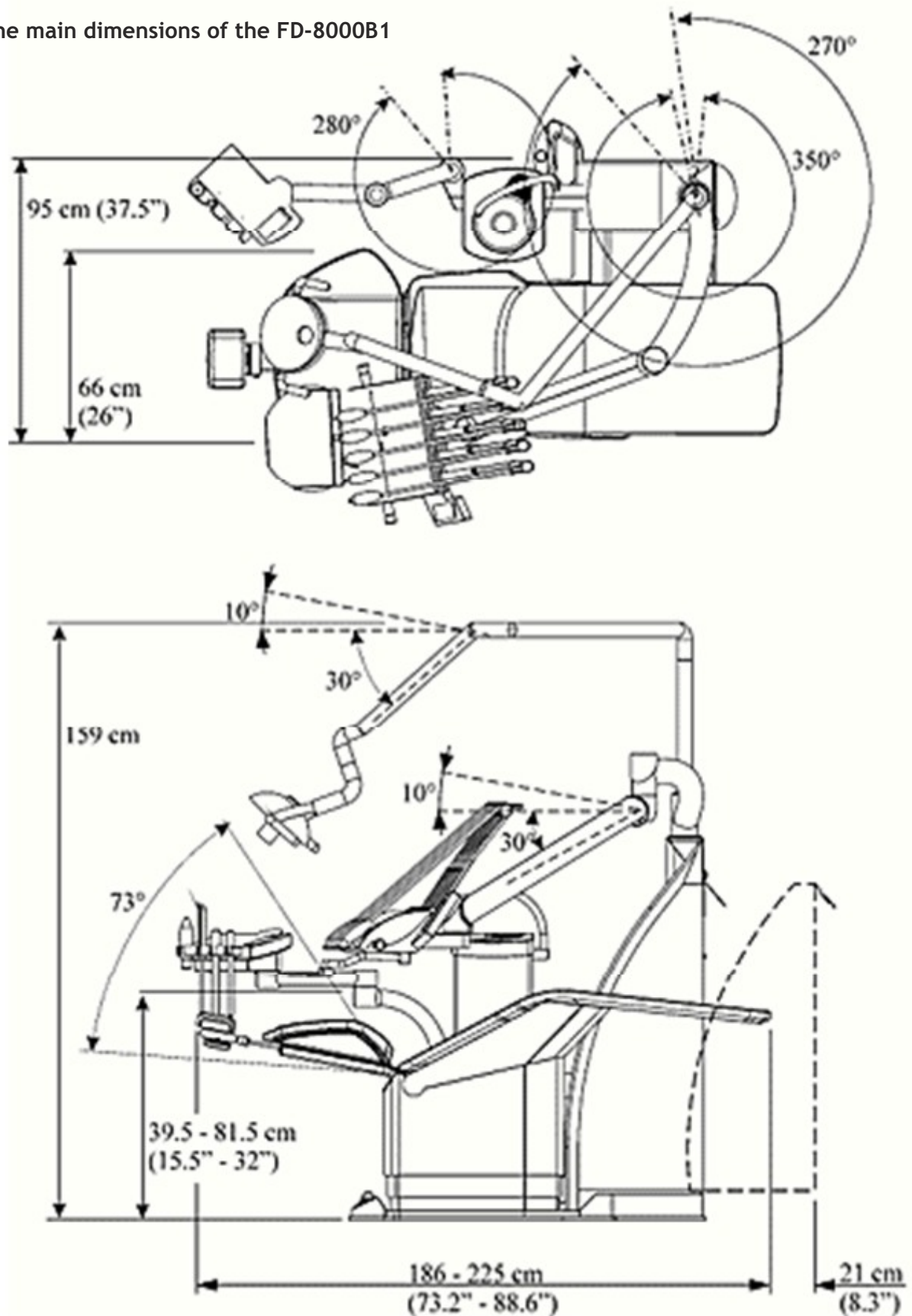
Suction arms are available on following locations:

- Suction arm connected to dental unit at 15:00 or at 12:00 in the office cabinet;
- Suction arm connected to cuspidor at 15:00;
- Suction arm with control panel for assistant connected to cuspidor;
- Suction arm behind the patient chair.

### **FD-8000B2**

This unit differs from the FD-8000B1 unit in that the instrument tubes hang from the bridge. An instrument is activated when it is lifted from the holder.

The main dimensions of the FD-8000B1



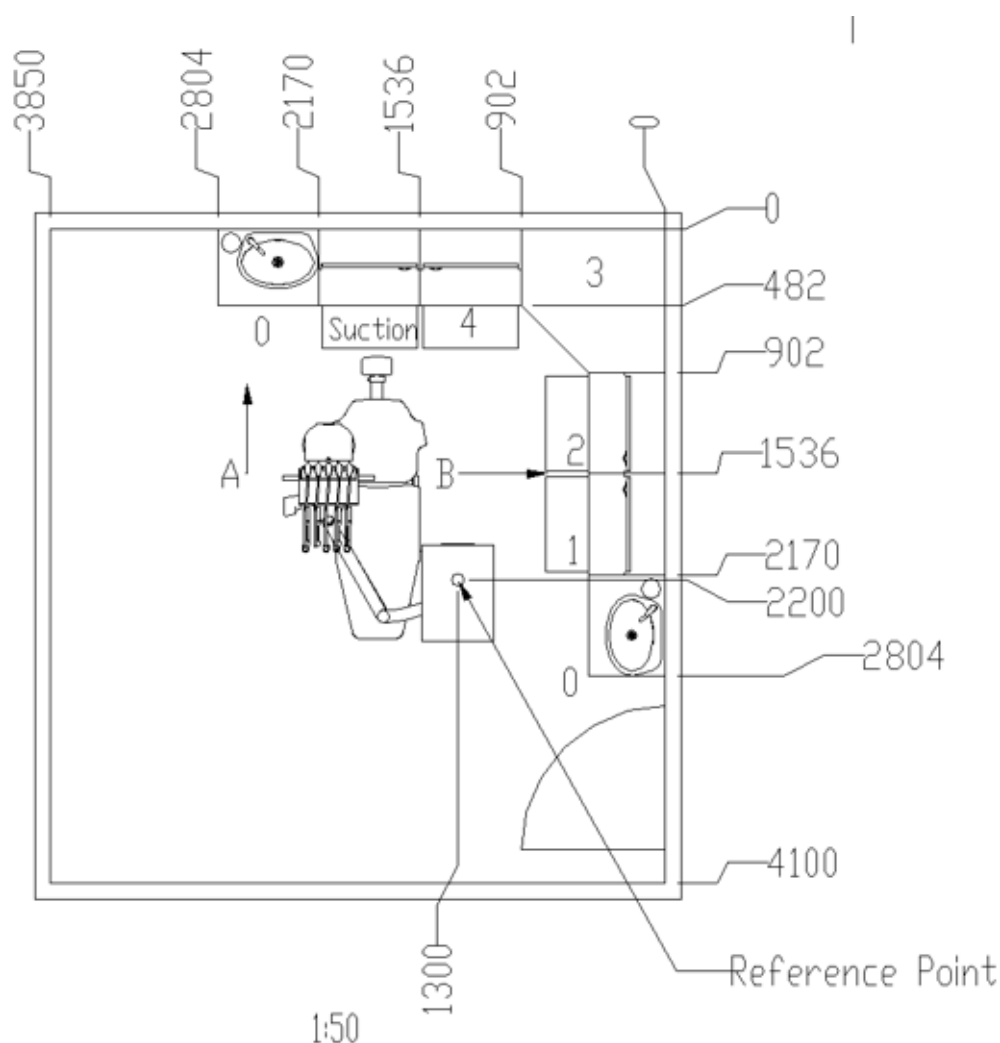


## FD-8000P1 - The Ceiling Unit

Mounting the instrument bridge to the ceiling allows this model to be installed in any office space. Control units (electronic plates, transformer etc.) for the dental unit are installed between the concrete ceiling and the suspended ceiling of the clinic room. An installation box of white painted sheet metal is also available.

The instrument bridge offers the same functionality as with the 8000B1 model. The dental light and optional monitor arm are connected to an adapter on the vertical arm. A bottle for water line disinfection is also attached to this adapter.

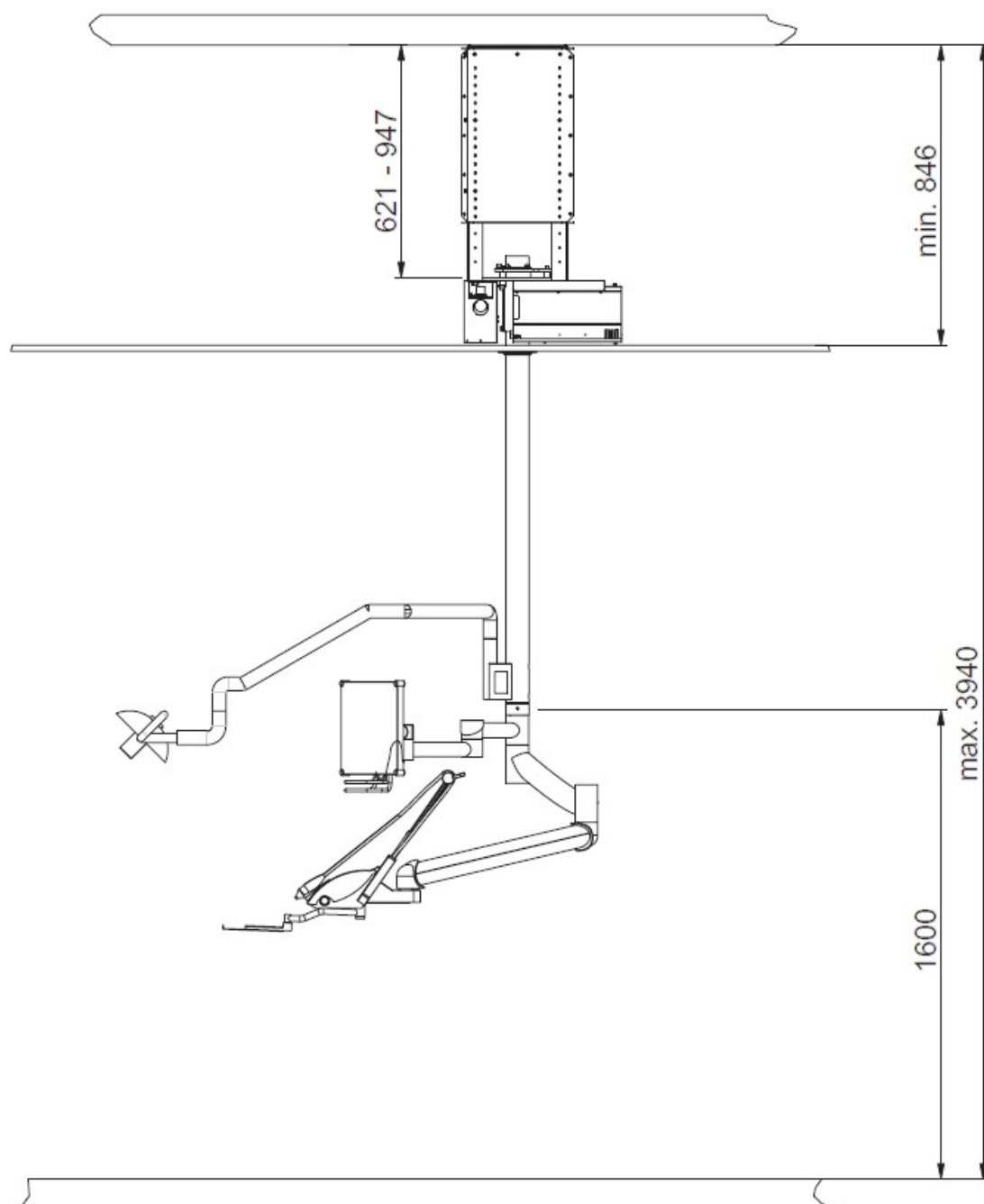
A cuspidor is not available with this model and the suction system is installed into a cabinet in the treatment room.



### Overview of the treatment room

Above is a to-scale drawing of a standard treatment room layout. The reference point is the central point of the ceiling installation column.

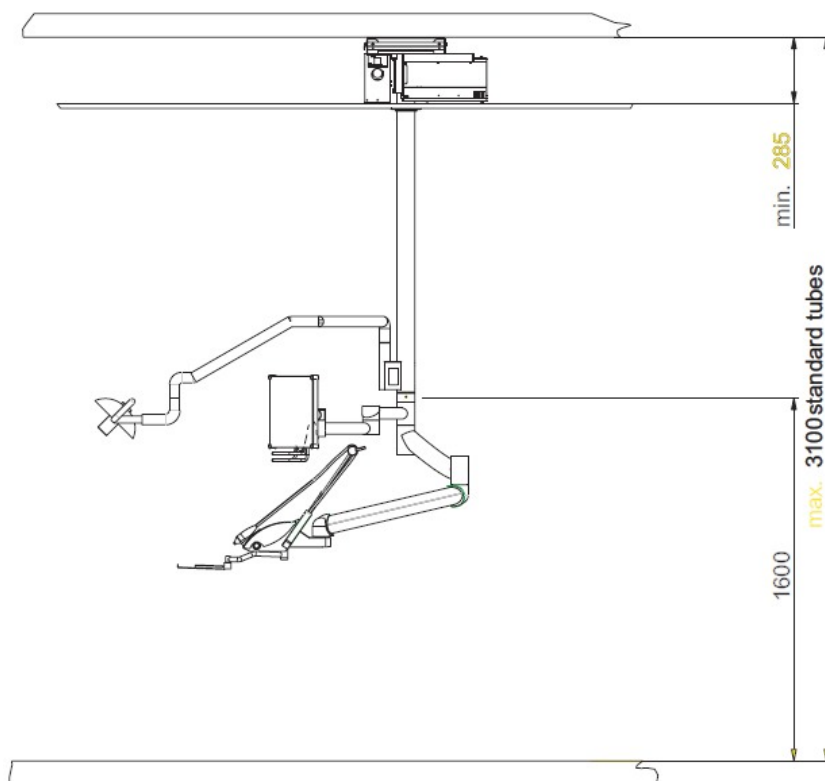




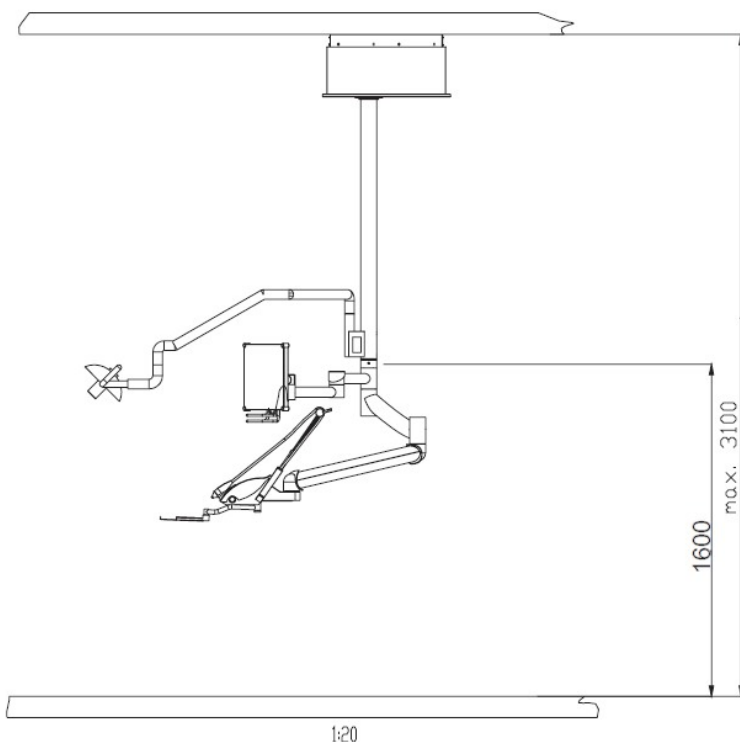
Installation with a high hanging ceiling.

## Height of the treatment room and installation methods

The following three images show possible installation configurations of the FD8000P1 unit in treatment rooms of different heights.



Installation with a low hanging ceiling.



Installation without a hanging ceiling.



## Technical specification for the dental unit

Protection class	I
Protection grade	B
Prot. against fluids	I PX0
Operational Safety grade	Standard. The unit is not suitable for use in an environment with a mixture of inflammable anaesthesia, oxygen or laughing gas and air.
Mode of operation	Intermittent operation. Duty cycle for the unit 60s/20s (use/not use)
Operating conditions	Temperature: 15 - 40°C      Relative humidity: 35 - 75%
Storage conditions	0 - 50°C      35 - 75%
Electrical Features	Supply: 230V / 50Hz Power consumption: 500W Main fuse Unit (incl. Chair): F3 / 6.3AT Main fuse unit only: F4 / 2 AT
Water connection	3 - 6 bar      (Particle size < 10 µm)
Compressed air	5.5 - 8 bar
Weight	FD-8000B1 / 65 kg FD-8000B2 / 72 kg FD-8000P1 / 40 kg